

WHITTLESEA BICYCLE USERS GROUP INC.

Committee of Management Meeting Minutes

28-05-2012

Page 1 of 4

1. Meeting Time and Venue

Meeting was opened at 6:35 pm in the Waterlily Room, Whittlesea Council Offices.

2. Present

Lee Robinson (Chairperson), Dave Fleming, Tori Pearce, Nicola Davis, Ashley Sutton, Robert Sutton, Ron Harvey, Paula Denny.

3. Apologies

Peter Duncombe, Glenn Eckardt, Maureen Giles.

4. Confirmation of Previous Minutes

The motion to accept minutes for the meeting of the 30-04-2012 was moved by Dave and seconded by Tori. The motion was accepted.

5. Business arising

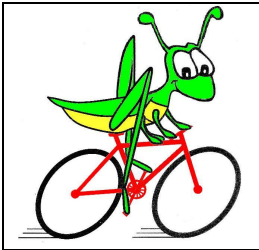
5.1 WBUG Survey

- Ashley to redistribute the survey results PDF to the committee.

6. Rides Subcommittee (Lee, Ron, Robert)

6.1 Ride Reports

- Sun 6-5-2012 - On a perfect day, 9 of us (7 men and 2 ladies) rode down to the city via Merri Creek and the Upfield Rail Trail. We had coffee on the way back at Brunetti's in Carlton and continued home via St Georges Rd. The total route was about 39 km.
- Thu 10-5-2012 - 9 members of the U3A group (All were also BUG members. 5 men and 4 ladies) rode to Docklands on a lovely sunny morning. After a coffee stop we continued around to the Jolimont train station and caught the train home. The total ride was about 25 km.
- Sat 12-5-2012 - On a cool, windy afternoon 8 of us (5 men and 3 ladies) rode to Edwards Lake, Reservoir and back, about 19 km. We encountered 1 very brief light shower but otherwise it was fine.
- Thu 17-5-2012 - On a perfect day, 8 members of the U3A group (all BUG members) rode from University Hill to Northlands via various bike paths and LaTrobe Uni for coffee at Casa Bella. Returning via the Darebin Creek trail. The total route was about 28 km.
- Sun 20-5-2012 - I heard it was a good ride - no details.
- Thu 24-5-2012 - On a cool but sunny day, 7 members of the U3A group (all BUG members) rode from Whittlesea Public Gardens to CERES via



WHITTLESEA BICYCLE USERS GROUP INC.

Committee of Management Meeting Minutes

28-05-2012

Page 2 of 4

Merri Creek and returning via St Georges Rd. The total route was about 35 km.

- Sat 26-5-2012 - It was a nice sunny day up until 3.00pm, but when the ride started so did the heaviest rain start to fall. Nevertheless 7 of us set out from the Thomastown library heading for South Morang. Several of the bike paths had turned to mud so we cut the ride short completing only 16 km.

6.2 Future Rides

The U3A group has the following program:

- Thu 31-05-2012, 9.00 am - Thomastown Library to Pentridge Village Piazza - 30 km.
- Thu 07-06-2012, 9.00 am - Thomastown Library to Edwardes Lake - 25 km.
- Thu 14-06-2012, 9.00 am - Municipal Offices to Mernda - 25 km.
- Thursday 21-06-2012, 9.00 am - University Hill to Rossanna - 30 km.
- Thursday 28-06-2012, 9.00 am - TBA.
- Thursday 5-07-2012, 9.00 am - Epping Football Ground to Craigieburn - 35 km.
- Thursday 12-07-2012, 9.00 am - Thomastown Library to Williamstown and Port Melbourne - 55 km.

WBUG Rides:

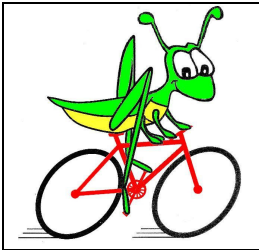
- Sun 17-06-2012 Craigieburn (Peter).
- 14-10-2012 Start of the Ladies Rides.
- Ron will create a draft rides schedule.

6.3 Ride Guidelines

- BUG Guideline Document – Lee has done a first draft of the guidelines which is a cut down version of Ashley's original guidelines. He will send it to Ron and Robert.

6.4 Ride Issues

- Breathable hi-visibility vests – vest chosen, Nicola to purchase 2 x medium size and 2 x large size vests.
- Bicycle maps from Cities of Melbourne and Darebin were distributed.
- Do we supply the right sort of ride? There was some discussion on this topic in respect to attracting and retaining people to rides and the BUG. We should reconsider shorter rides again and more family focussed rides. Ron's Ladies Only rides are another approach.



WHITTLESEA BICYCLE USERS GROUP INC.

Committee of Management Meeting Minutes

28-05-2012

Page 3 of 4

7. Marketing Subcommittee (Maureen, Nicola)

7.1 Ride Marketing

- Local paper does not seem interested in BUG rides/articles. Consider spending some grant money to buy space in the paper if the grant guidelines allow for it.

8. Finance & Membership Subcommittee (Dave, Ron)

8.1 Treasurer's Report

- Current balance \$8912.
- BNV have been invoiced for the \$350 for the Super Tuesday bike counts.
- We now have a liability from last year's \$5,500 grant that we initially thought did not have to be accounted for. Could go towards our insurance but we need to clarify the conditions it was granted for when Peter returns. Does not seem to be specified in the minutes.
- We need to sign the paperwork for the \$10,000 grant that has been approved for the bicycle signage on Plenty Road. Can wait until Peter returns.

8.2 New Members

The following list of new members was accepted by the committee:

- Bronwyn Murdoch, Paula Denny and Dave Evans.

9. IT & Website Subcommittee

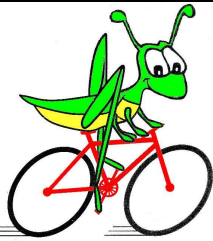
- (Robert) Web Page Image – a long and narrow format cycling related image that text can go on to is required – needs to be copyright free.
- (Robert) The front page of the website needs a rewrite. Looking for someone who is good with words to update it.
- Nicola moved that the new website should go live, seconded by Lee. Motion accepted.

10. Advocacy Subcommittee (Peter, Glenn, Nicola)

- (Nicola) Humevale Hill Ride – The popular cycling route has been resurfaced and covered in loose gravel. Due to the low traffic levels on this road the gravel is not clearing and it is currently unsuitable/unsafe for cyclists. Council have said that they will use a street sweeper to clean it.

11. Committee Guidelines

No new guidelines tabled.



WHITTLESEA BICYCLE USERS GROUP INC.

Committee of Management Meeting Minutes

28-05-2012

Page 4 of 4

12. New Business

12.1 Cycling Confidence Training – Ron has received a pamphlet on a course from Darebin. He would consider working with Whittlesea Council to run something similar. Ron to email pamphlet.

12.2 Cycling Safety Campaign – We will need to scale back from the \$25,000 in our application to fit the \$10,000 we received.

12.3 Thomastown Parkiteer – Lee reported that he is now using the bike parking facility daily but his is the only bike he has seen in it. Quite a few bikes are using the bike hoops as they are now effectively undercover under the footbridge over the track. He wondered if there was anything the BUG wanted to do to promote the use of the secure Parkiteer cages as a cycling community service and a way to promote ourselves amongst those cyclists.

From the comments at the meeting it seems Epping and especially South Morang are much better patronised.

12.4 BNV Bicycle Project Survey – The response to this is due this Thursday and before Peter returns. Lee will look at it and see if he can respond.

12.5 AusCycle

- Requires assessment tasks to be submitted. Tori has completed hers and Ron still requires to submit his.
- Tori and Nicola to arrange the schedules. Tori and Ron are looking at July. Tori to consider a ladies only one.
- Peter to confirm the council car park can be used for training.
- We are required to submit a ride report each month.
- AusCycle requires its own meeting agenda item in future.

12.6 AGM – We need to start planning, how much notice do we need to give?

13. Future Meetings

13.1 CoM Meetings

The next CoM will be Monday 25-06-2012 at 6:30pm.

Future meeting will be held on the last Monday of each month except December.

13.2 General Meetings

To be confirmed.

14. Meeting closed 8:30 pm.